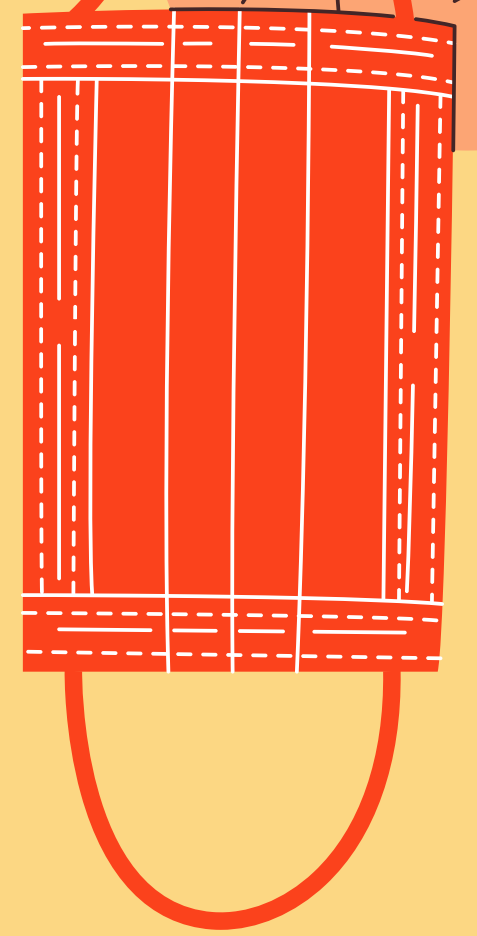
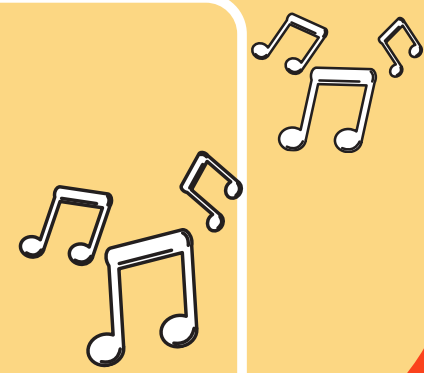




Fingal Children's Choir

Autumn 2020



These proposals have been written by the Irish Institute of Music & Song with the safety and health of our staff and students in mind. We have made these proposals with reference to the most recent government guidelines and the most up-to-date studies on the prevention and spread of COVID-19. These proposals are subject to change as we continue to adapt to changing government guidelines and best practices of the industry.



We encourage a friendly and positive atmosphere in our choir.
Elbow high-fives, waving and finger guns are all encouraged!



Coming to Lessons - What YOU Can Do

- **Contactless Drop Off and Collection**

Children will be dropped to the front door of St Sylvester's Parish Hall

Children will be collected from outside the front of the main hall

We will collect and deliver the students to you one-by-one.

We request that you kindly wear a mask and queue maintaining adequate social distance for collection and drop-off. Parents, guardians and minders are not allowed in the hall.

- **Hand Hygiene**

Singers will be asked to use hand sanitiser on arrival and before they leave the rehearsal

- **When NOT to attend:**

Singers must not attend lessons if they are experiencing any symptoms associated with COVID-19, or if they have recently been in close contact with a confirmed or suspected case of COVID 19 within 14 days. For common symptoms see www2.hse.ie/coronavirus for a full list. A COVID questionnaire will be sent to parents to be completed prior to the first rehearsal.

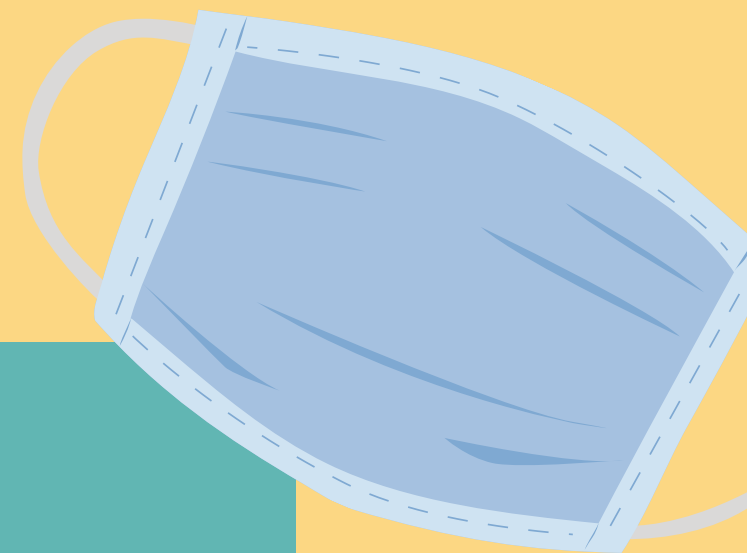
- **If a student becomes unwell:**

If a singer displays any symptoms of COVID-19 during a lesson, parents/guardians will be contacted immediately for collection. The singer will be brought to a supervised isolation room.





Fingal Children's Choir Autumn 2020



Teaching & Directing Responsibly - What WE Are Doing

- **Choir Numbers & Seating**

Choir will be organised into 'pods' of 6 children with social distance between each child. As we are using a large hall, we can accommodate numerous 'pods' in the choir. All rehearsals will adhere to social distancing guidelines.

- **Hygiene and Ventilation**

Windows & doors, as well as part of the front wall of the hall will be open for the duration of the rehearsal. Please bring warm clothing.

We will take a break after 30 mins to allow adequate ventilation

Children aged 12 and under are not required to wear a face mask, but are welcome to if they wish. Conductor, accompanist and any helpers will wear masks and maintain 2m social distance from the choir.

- **Contact tracing**

A log will be maintained of all attendance, times and dates for each rehearsal.

- **Keeping Up to Date**

We will continue to follow closely the guidelines of the government, the HSE and industry experts as they progress, and will keep students and parents informed as we go.



Our proposal is based on the latest research carried out by universities and vocologists, as well as gov.ie guidance for cultural activities & classes. Please see below for references:



<https://www.gov.ie/en/publication/18e18-level-2/#organised-indoor-gatherings>



<https://www.mh-freiburg.de/en/university/covid-19-corona/risk-assessment>